

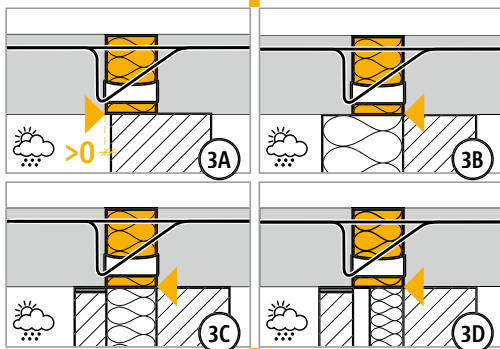
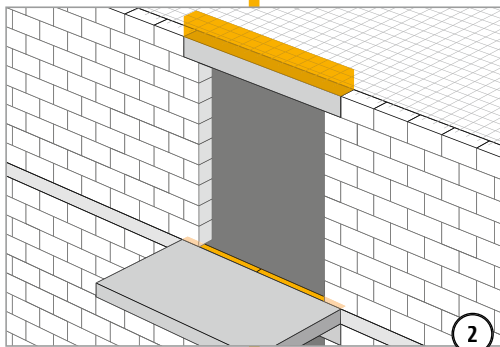
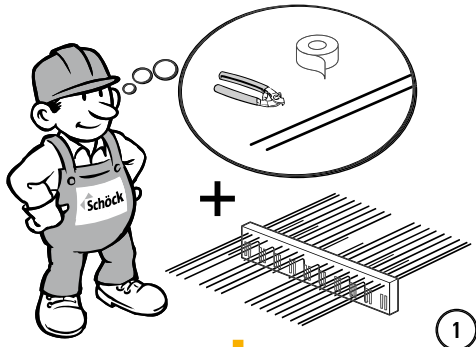
## Schöck Isokorb® XT/T tipo K



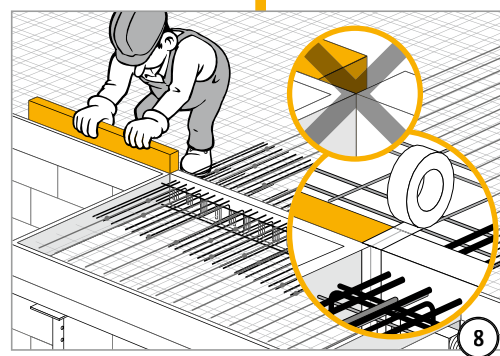
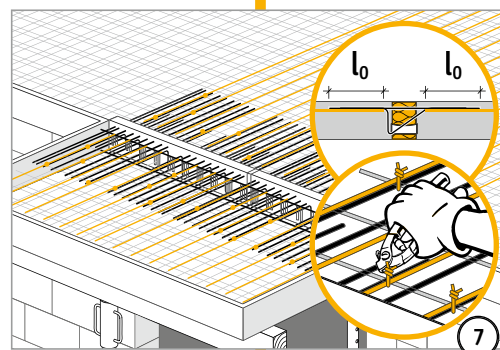
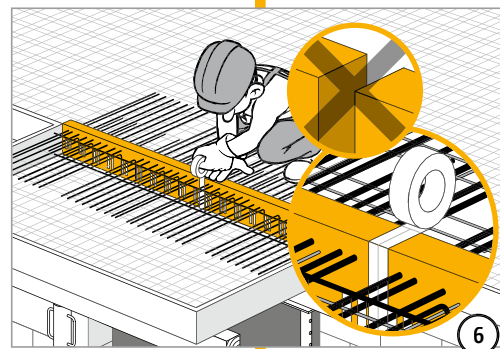
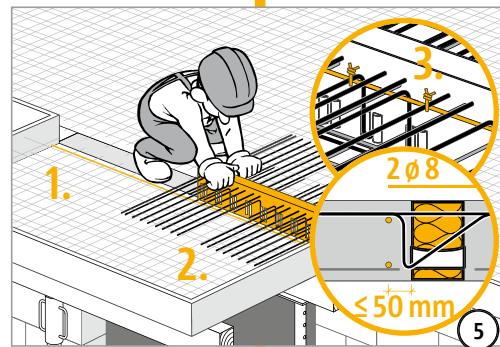
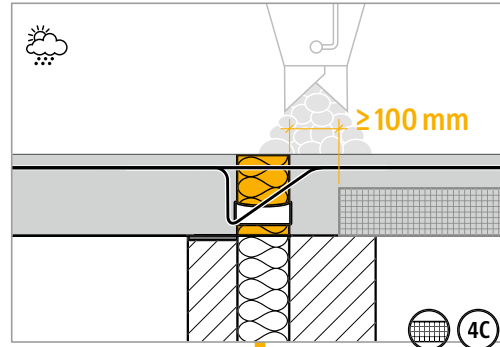
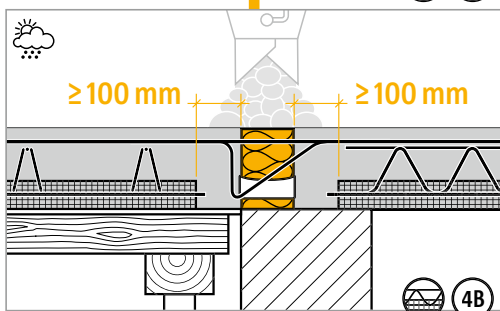
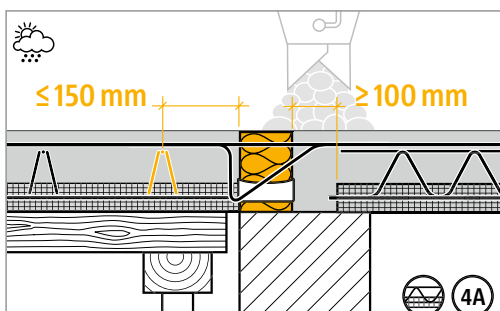
XT/T  
tipo K

Calcestruzzo armato – Calcestruzzo  
armato

# Istruzioni di posa



④A)–④C) Nei giunti di compressione è necessaria una zona di getto in opera  $\geq 100$  mm!



XT/T  
tipo K

Calcestruzzo armato – Calcestruzzo armato