


# Certificate

valid until 31.12.2024

 **Passivhaus  
Institut**  
Rheinstraße 44/46  
D-64283 Darmstadt

## Balcony connection

Wall Connection

Low Energy  
Component

**Schöck Isokorb® XT Typ K-WO/K-WU**  
**160-250mm slab thickness**

**Manufacturer: Schöck Bauteile GmbH**  
**Vimbucher Str. 2 76354 Baden-Baden**

The following criteria were used in awarding this certificate:

### Efficiency Criterion

In two typical applications<sup>\*)</sup>, the construction fulfills the requirement of

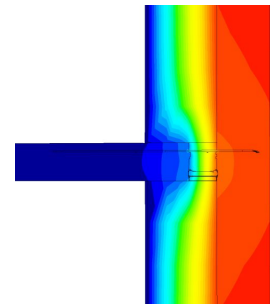
$$\Delta U_{WB} < 0.025 \text{ W/(m}^2\text{K)}$$

### Comfort Criterion

The inner surface must be warm enough to prevent mould as well as uncomfortable down-draught and radiation losses.

$$\theta_{i,min} > 17.00 \text{ } ^\circ\text{C}$$

Following heat transmission coefficients ( $\Psi$  [W/(mK)])  
were validated:



Isothermal map of  
XT Typ K-WO-M2-V1

Product	Slab thickness				
	160	180	200	220	250
XT Typ K-WO-M2-V1	-	0.156	-	-	-
XT Typ K-WU-M2-V1	-	0.154	-	-	-

<sup>\*)</sup> The criterion was validated on both, a row house and a apartment dwelling  
(according to criteria "balcony connection" v2.1.1)

The certificate includes types with minor statical performance. The thermal bridge  
coefficient can be approximated by linear interpolation

