

Schöck Isokorb® T Typ S

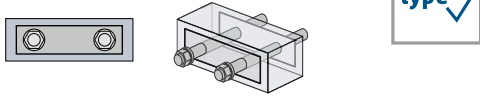


T
Typ S

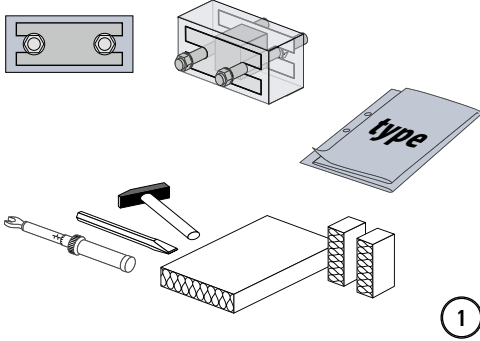
Stahl – Stahl

Einbauanleitung

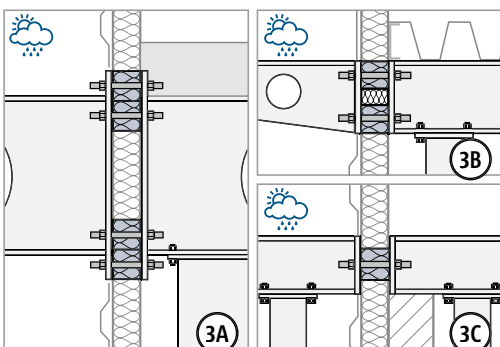
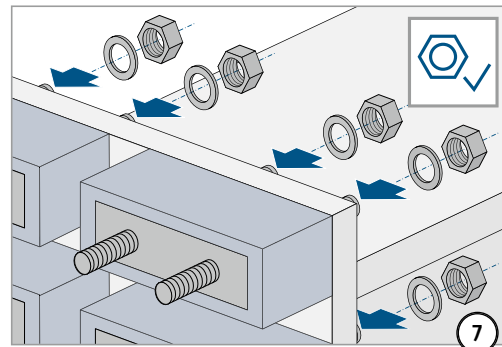
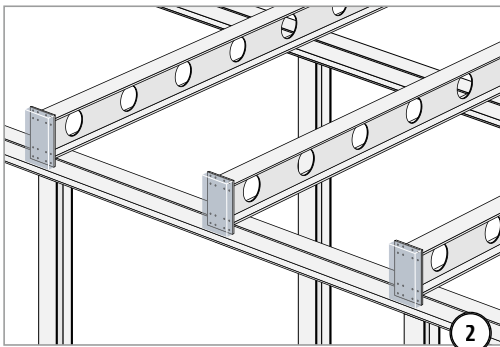
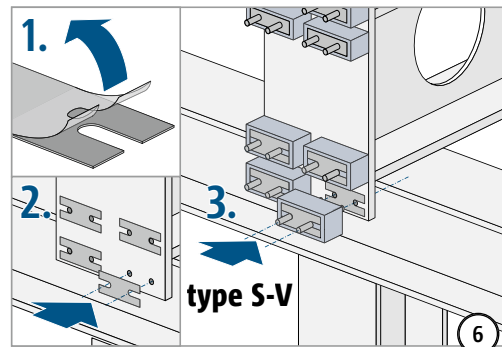
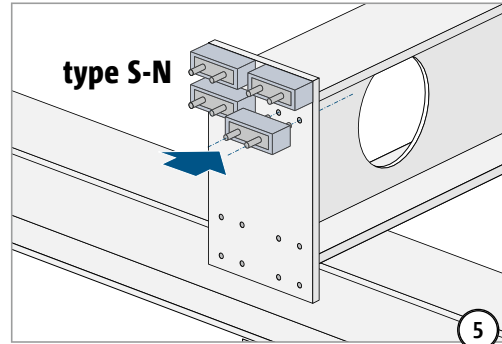
type S-N



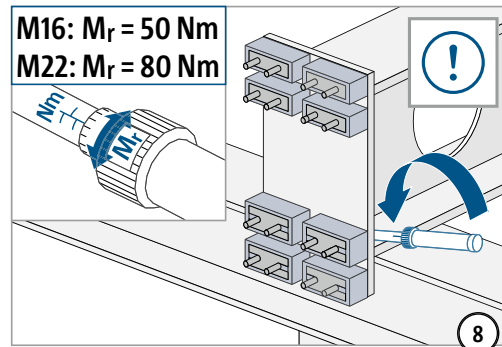
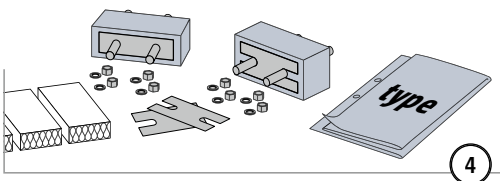
type S-V



! Alle Gewinde auf Leichtgängigkeit prüfen. Falls erforderlich, zuerst säubern und schmieren!



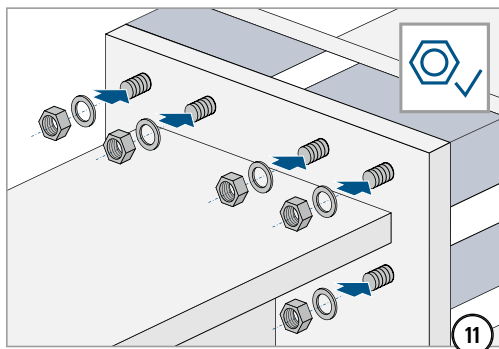
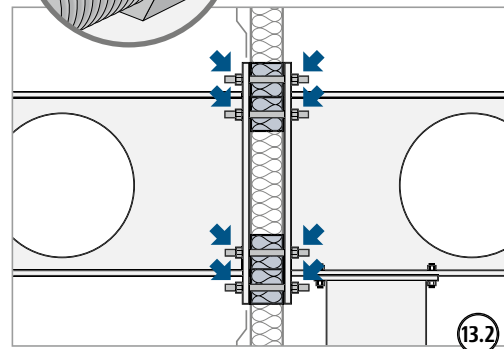
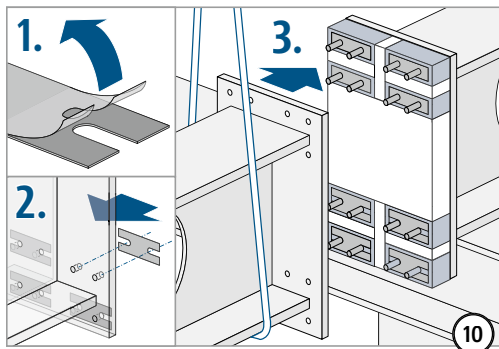
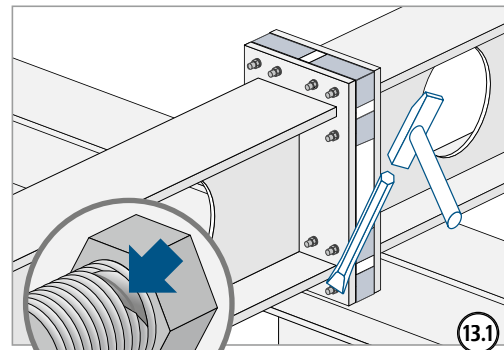
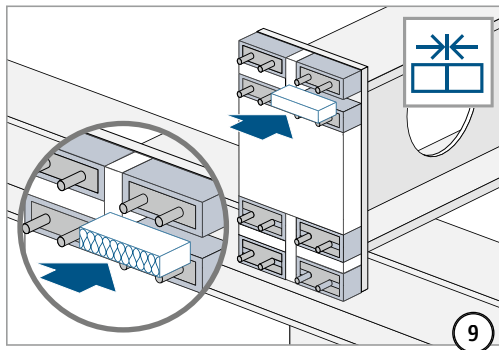
type	Gewinde	Schlüsselweite
S-N-D16	M16	24 mm
S-N-D22	M22	32 mm
S-V-D16	M16	24 mm
S-V-D22	M22	32 mm



T
Typ S

Stahl – Stahl

Einbauanleitung



type	Gewinde	Schlüsselweite
S-N-D16	M16	24 mm
S-N-D22	M22	32 mm
S-V-D16	M16	24 mm
S-V-D22	M22	32 mm

