


Certificate

valid until 31.12.2024

 **Passivhaus
Institut**
Rheinstraße 44/46
D-64283 Darmstadt

Balcony connection

with height offset

Low Energy
Component

Schöck Isokorb® XT Typ K-BH/K-HV
160-250mm slab thickness

Manufacturer: Schöck Bauteile GmbH
Vimbucher Str. 2 76354 Baden-Baden

The following criteria were used in awarding this certificate:

Efficiency Criterion

In two typical applications^{*)}, the construction fulfills the requirement of

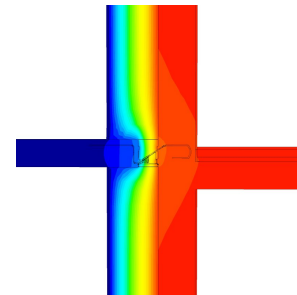
$$\Delta U_{WB} < 0.025 \text{ W/(m}^2\text{K)}$$

Comfort Criterion

The inner surface must be warm enough to prevent mould as well as uncomfortable down-draught and radiation losses.

$$\theta_{i,min} > 17.00 \text{ } ^\circ\text{C}$$

Following heat transmission coefficients (Ψ [W/(mK)])
were validated:



Isothermal map of XT
Typ K-BH-M2-V1

Product	Slab thickness				
	160	180	200	220	250
XT Typ K-HV-M2-V1	-	0.137	-	-	-
XT Typ K-BH-M2-V1	-	0.134	-	-	-

^{*)} The criterion was validated on both, a row house and a apartment dwelling
(according to criteria "balcony connection" v2.1.1)

The certificate includes types with minor statical performance. The thermal bridge
coefficient can be approximated by linear interpolation

